

# VEDANT PUBLIC SCHOOL

ISANPUR, AHMEDABAD - 382443.

Seat No. :  
બેઠક નંબર :

EXAM :  
પરીક્ષા :

F.A - 4 Exam

DATE :

તારીખ :

(2018-2019)

STD. / CLASS :

ધોરણ / વર્ગ :

II<sup>nd</sup>

SUBJECT :

વિષય :

Maths.

MAIN  
મુખ્ય પુસ્તકો 1 +

Supplements  
પુસ્તક પુસ્તકો

=

TOTAL  
કુલ

Supervisor's Sign.  
નિરીક્ષકની સહી

Examiner's Sign.  
પરીક્ષકની સહી

Ques. No.	Total Marks	Marks Obtain
1		
2		
3		
4		
5		
6		
7		
8		
TOTAL		

Write From Here / અહીંથી લખવું.

FA-4 Revision [2018-19]

Que-1 M.C.Q.

1) 1 metre = 100 Centimetres.

a) 10 b) 100 c) 1000  
=) 100

2) Which is Standard unit of measuring length ?

a) metre b) Centimetre c) millimetre  
=) metre

3) To measure the length of something correctly we use

24  
21  
20  
2015

②

$$\square + \square + \square + \square + \square = \square$$

ca) cubit b) hand span c) metre rod  
d) none of these

z) metre rod.

4) 1 kg = 1000 gram

ca) 100 b) 1000 c) 10000

z) 1000

5) Which substances like water, milk  
oil ~~et~~ etc

ca) liquid b) solid c) quantity

z) liquid

6) 1 l = 1000 ml

ca) 100 b) 10 c) 1000

z) 1000

7) correct unit to measure milk in a  
glass is

ca) kg b) ml c) l

z) ml

8) Difference between 80 l and 60 500 ml

ca) 60 l b) 500 ml c) 19 l 500 ml

80		ml
80		000
- 60		500
19		500

Ans 19 l 500 ml

344  
344  
344

$$\square = \square + \square + \square + \square + \square = \square$$

9) Which of these is correct way of writing eight kilograms?

- a) 8 b) 8kg c) 8 kgs  
 z) 8kg.

10) Two and a half kg is the same as

- a) 2kg 2g b) 2kg 200g c) 2kg 500g  
 z) 2kg 500g

11) The sum of 30m 24cm and 20m 20cm is

- a) 50m 50cm b) 51cm c) 50m 44cm.

m	cm
30	24
+ 20	20
50	44

Ans 50m 44cm.

12) Which is the smaller unit of capacity

- a) millilitres b) litres c) gram  
 z) millilitres.

13) Which is the bigger unit of capacity

- a) litres b) gram c) millilitres.  
 z) litres.

14) We use a wooden or iron rod called

201  
21/11/17  
5:15

4

$$\square + \square + \square + \square + \square = \square$$

- 14) a) metre rod b) hand span c) cubit  
2) metre rod.

15) Which is the smaller unit of measuring length?

- a) metre b) centimetre c) gram.  
2) Centimetre

16) Which is the bigger unit of measuring length?

- a) centimetre b) gram c) metre  
2) metre

17) five and a half kg is the same as  
a) 5 kg 5 g b) 5 kg 200 g c) 5 kg 500 g  
2) 5 kg 500 g.

18) 1000 ml = 1 l

- a) 10 b) 1 c) 1000  
2) 1

19) The quantity of liquid that a vessel can hold is called

- a) kilogram b) capacity c) gram  
2) Capacity.

20) Which are small quantities measured in

- a) grams b) milligram c) kilogram  
2) grams.

(5)

□ + □ + □ + □ + □ = □

Ques Add the following.

1) <sup>①</sup> 48 cm + 35 cm = 83 cm

2) <sup>①</sup> 417 g + 327 g = 744 g

3) <sup>①①</sup> 463 g + 539 g = 1002 g

4) 

m	cm
40	35
+ 22	41
62	76

5) 

m	cm
18	22
+ 11	20
29	42

6) 

m	cm
20	42
+ 13	12
33	54

7) 

m	cm
<sup>①</sup> 17	<sup>①</sup> 42
+ 08	29
25	71

8) 

kg	g
<sup>①</sup> 56	<sup>①</sup> 127
+ 04	248
60	375

9) 

kg	g
<sup>①</sup> 285	<sup>①①</sup> 483
+ 170	318
455	801

10) 

kg	g
<sup>①</sup> 78	<sup>①①</sup> 368
+ 95	488
173	856

11) 

kg	g
35	420
+ 42	007
77	427

12) 

l	ml
8	206
+ 2	434
10	634

13) 

l	ml
<sup>①</sup> 38	400
+ 23	150
61	550

14) 

l	ml
<sup>①</sup> 27	450
+ 15	300
42	750

15) 

l	ml
<sup>①</sup> 50	<sup>①</sup> 570
+ 16	263
66	833

16) 

l	ml
<sup>①</sup> 4	<sup>①</sup> 150
+ 3	650
7	800

17) 

l	ml
<sup>①</sup> 46	250
+ 38	400
84	650

18) 

l	ml
<sup>①</sup> 430	403
+ 397	380
827	783

19) 

l	ml
<sup>①</sup> 27	450
+ 15	300
42	750

$$\square + \square + \square + \square + \square = \square$$

Ques 3 Subtract the following

$$\begin{array}{r} 1) \quad 48 \text{ cm} \\ - 28 \text{ cm} \\ \hline 20 \text{ cm} \end{array} \quad \begin{array}{r} 2) \quad 80 \text{ cm} \\ - 56 \text{ cm} \\ \hline 24 \text{ cm} \end{array} \quad \begin{array}{r} 3) \quad 375 \text{ g} \\ - 261 \text{ g} \\ \hline 114 \text{ g} \end{array} \quad \begin{array}{r} 4) \quad 596 \text{ g} \\ - 203 \text{ g} \\ \hline 393 \text{ g} \end{array}$$

$$\begin{array}{r} 5) \quad 455 \text{ ml} \\ - 203 \text{ ml} \\ \hline 252 \text{ ml} \end{array} \quad \begin{array}{r} 6) \quad 528 \text{ ml} \\ - 195 \text{ ml} \\ \hline 328 \text{ ml} \end{array} \quad \begin{array}{r} 7) \quad 97 \text{ l} \\ - 66 \text{ l} \\ \hline 31 \text{ l} \end{array} \quad \begin{array}{r} 8) \quad 664 \text{ l} \\ - 324 \text{ l} \\ \hline 337 \text{ l} \end{array}$$

9)	$\begin{array}{r l} \text{m} & \text{cm} \\ \hline 716 & 416 \\ - 86 & 58 \\ \hline 39 & 37 \\ \hline 47 & 19 \end{array}$	10)	$\begin{array}{r l} \text{m} & \text{cm} \\ \hline 116 & \\ - 26 & 40 \\ \hline 18 & 30 \\ \hline 08 & 10 \end{array}$	11)	$\begin{array}{r l} \text{kg} & \text{g} \\ \hline 378 & 421 \\ - 53 & 202 \\ \hline 325 & 219 \end{array}$
----	--	-----	--	-----	---

12)	$\begin{array}{r l} \text{kg} & \text{g} \\ \hline 414 & 3918 \\ - 484 & 408 \\ \hline 27 & 209 \\ \hline 427 & 199 \end{array}$	13)	$\begin{array}{r l} \text{kg} & \text{g} \\ \hline 71510 & \\ - 860 & 423 \\ \hline 563 & 213 \\ \hline 297 & 210 \end{array}$	14)	$\begin{array}{r l} \text{kg} & \text{g} \\ \hline 815 & \\ - 85 & 488 \\ \hline 78 & 368 \\ \hline 17 & 120 \end{array}$
-----	--	-----	--	-----	---

15)	$\begin{array}{r l} \text{l} & \text{ml} \\ \hline 6 & 800 \\ - 4 & 200 \\ \hline 2 & 600 \end{array}$	16)	$\begin{array}{r l} \text{l} & \text{ml} \\ \hline 211 & 01212 \\ - 875 & 132 \\ \hline 140 & 043 \\ \hline 175 & 089 \end{array}$	17)	$\begin{array}{r l} \text{l} & \text{ml} \\ \hline 328 & 915 \\ - 27 & 816 \\ \hline 301 & 109 \end{array}$	18)	$\begin{array}{r l} \text{l} & \text{ml} \\ \hline 315 & 12 \\ - 48 & 250 \\ \hline 38 & 400 \\ \hline 07 & 850 \end{array}$
-----	--	-----	--	-----	---	-----	--

7

[ ] + [ ] + [ ] + [ ] + [ ] = [ ]

19)	m	cm	20)	m	cm	21)	m	cm	22)	m	cm
	712	112		715	1716		39	915		79	17
	82	22		86	86		40	05		80	79
	56	15		-29	97		-20	38		-23	83
	26	07		56	89		19	67		56	96

Que4 In which standard unit of length (cm or m) would you measure the length the following ?

1) The width of your palm = cm

2) The length of a cricket bat = cm

3) The length of a rope = m

4) The length of a wall = m

5) The length of a cupboard = m

6) The length of your book = cm

7) The length of electric wire = m

8) The length of a pencil = cm

9) The length of a pen = cm

10) The length of eases = cm

□ + □ + □ + □ + □ = □

Qye-5 Word problem.

1) A ribbon is 15 m long. Another piece of 18 m length is joined to it. How much is the total length of the ribbon?

$$\begin{array}{r}
 \textcircled{1} \\
 15 \text{ m} \\
 + 18 \text{ m} \\
 \hline
 33 \text{ m}
 \end{array}$$

2) The total length of the ribbon is 33 m

2) Pintu purchased 380 m 42 cm of steel wire for fencing. He fenced 20 m 25 cm from it. How much wire is left with him?

<del> <math display="block">  \begin{array}{r}  \textcircled{1} \\  380 \text{ m } 42 \text{ cm} \\  + 20 \text{ m } 25 \text{ cm} \\  \hline  400 \text{ m } 67 \text{ cm}  \end{array}  </math> </del>	$  \begin{array}{r}  \text{m} \mid \text{cm} \\  380 \mid 42 \\  - 20 \mid 25 \\  \hline  360 \mid 17  \end{array}  $
--	---

2) 360 m 17 cm wire is left

3) Shivani is 160 cm tall. Tina is shorter by 37 cm. How tall is Tina?

$$\begin{array}{r}
 510 \\
 160 \text{ cm} \\
 - 37 \text{ cm} \\
 \hline
 123 \text{ cm}
 \end{array}$$

2) Tina is 123 cm tall.



$$\square + \square + \square + \square + \square = \square$$

4) A vendor purchased 82 kg 236 g of wheat and he sold 50 kg 160 g of it. How much wheat is left with him?

$$\begin{array}{r|l} \text{kg} & \text{g} \\ \hline 82 & 236 \\ - 50 & 160 \\ \hline 32 & 076 \end{array}$$

⇒) 32 kg 076 g wheat is left with him.

5) Reena weighs 28 kg. Her sister Shalu weighs 5 kg less than her. What is the weight of Shalu?

$$\begin{array}{r} 28 \text{ kg} \\ - 05 \text{ kg} \\ \hline 23 \text{ kg} \end{array}$$

⇒) Shalu weighs 23 kg

6) A cow gives 6 litres of milk. Another cow gives 5 litres of milk. How much milk do they give altogether?

$$\begin{array}{r} 5 \text{ l} \\ + 6 \text{ l} \\ \hline 11 \text{ l} \end{array}$$

⇒) 11 l milk altogether.

$$\square + \square + \square + \square + \square = \square$$

7) One bucket has 19 l 275 ml of water. Another bucket has 17 l 160 ml of water. Find the difference in their capacities.

$$\begin{array}{r|l} \text{l} & \text{ml} \\ 19 & 275 \\ - 17 & 160 \\ \hline 02 & 115 \end{array}$$

∴ 2 l 115 ml this capacity.

8) A bottle contains 450 ml of water. Another bottle contains 507 ml of water. Find the total amount of water in two bottles.

$$\begin{array}{r} 450 \text{ ml} \\ + 507 \text{ ml} \\ \hline 957 \text{ ml} \end{array}$$

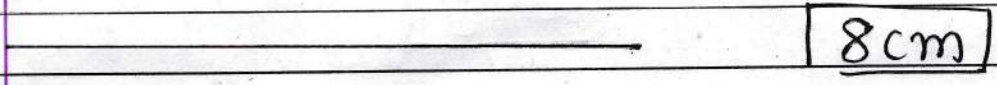
∴ 957 ml water in two bottles.

Ques  
for ques  
6-15

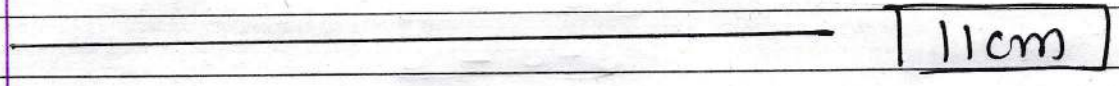
+  +  +  +  =

Que-6 Measure the length of the line using a ruler and write in the box

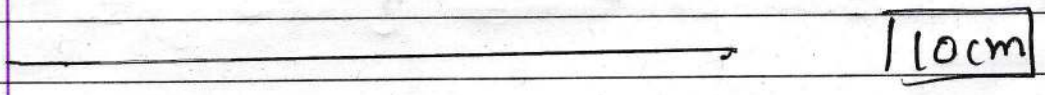
1)



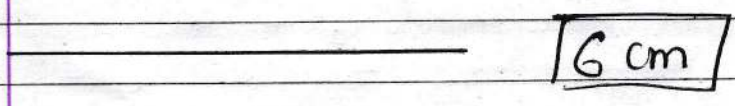
2)



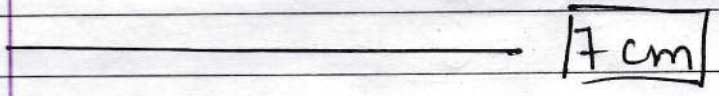
3)



4)



5)



6)

